

SCK-50

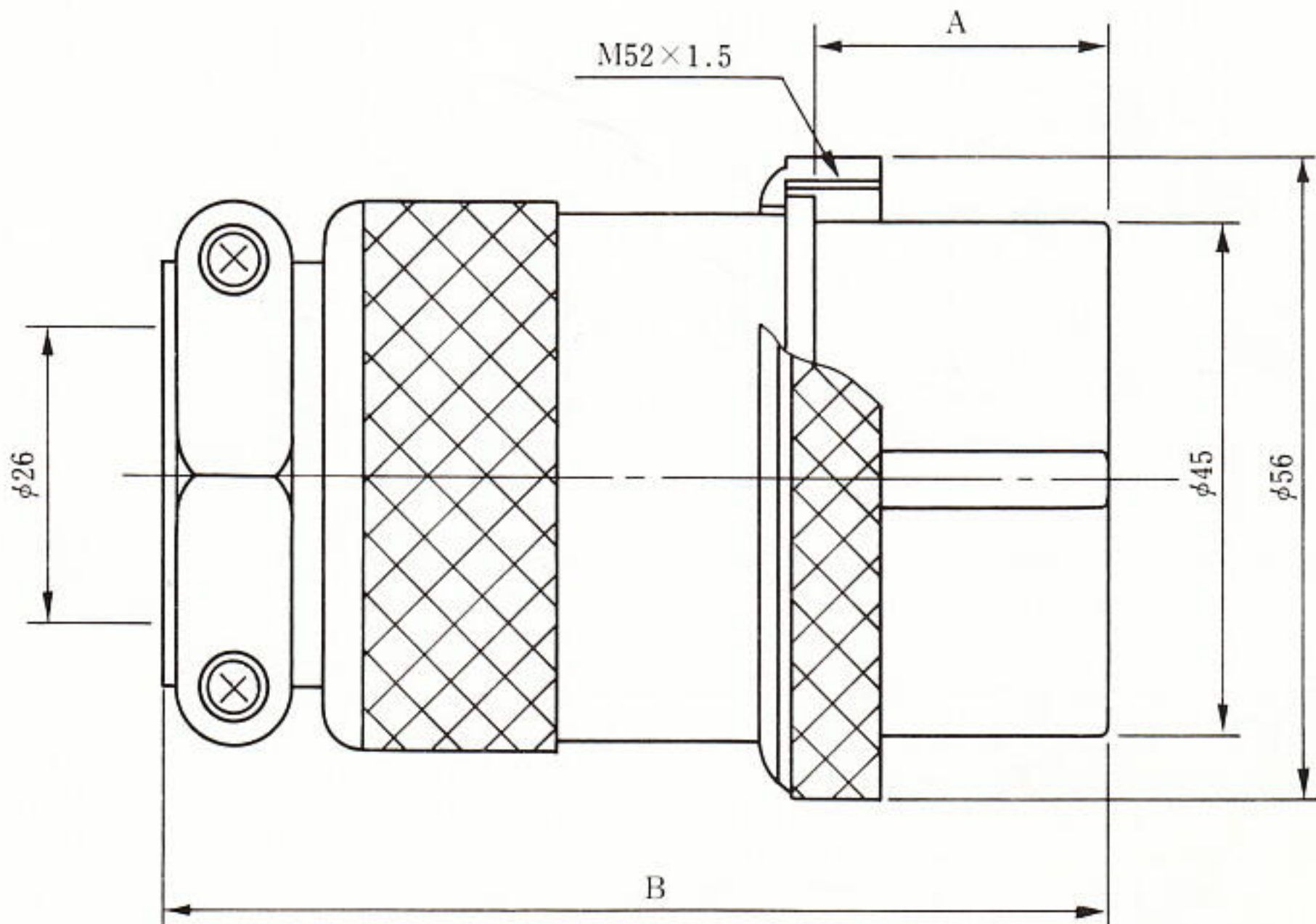


(PR)



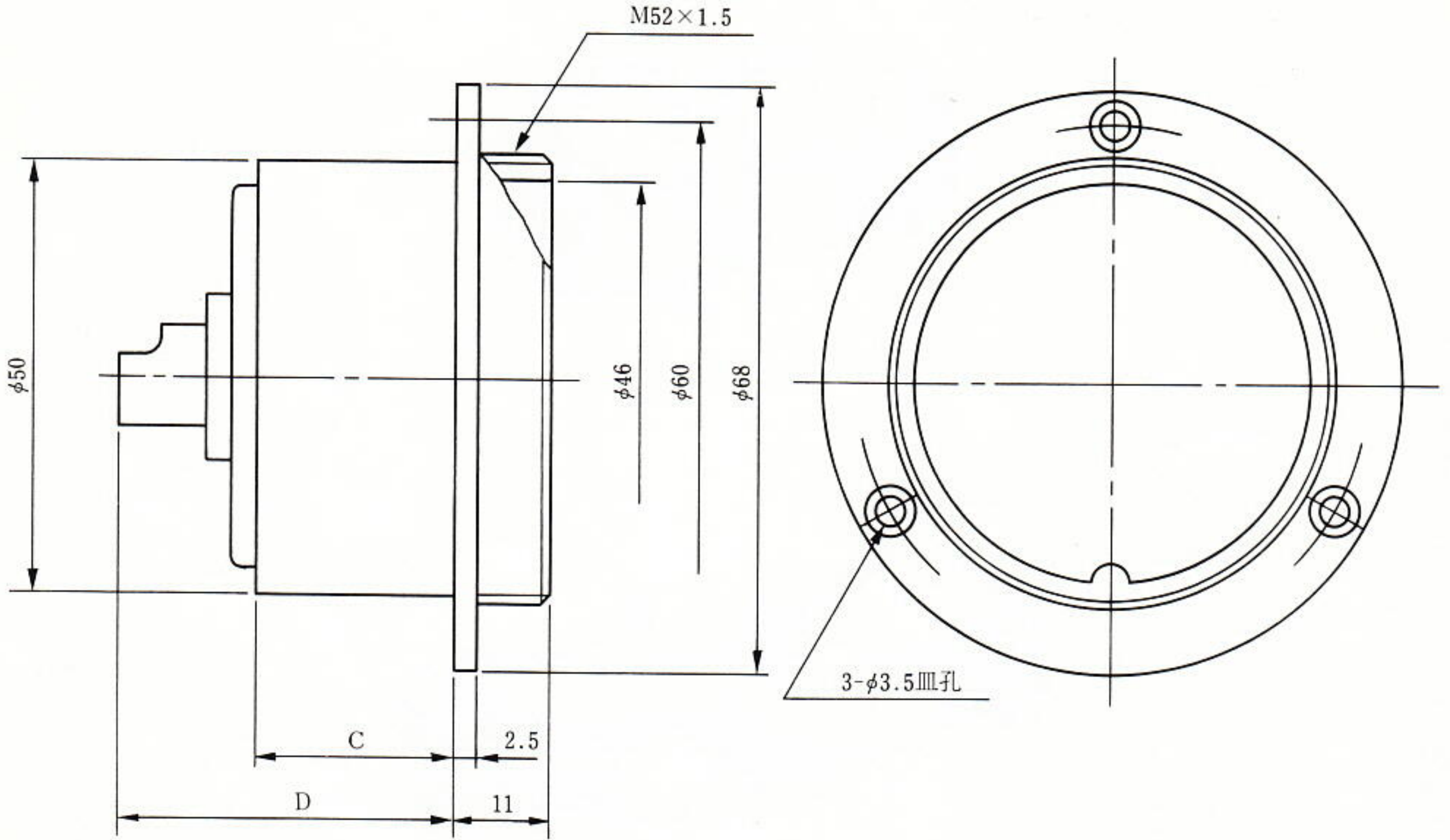
(PA)

○ プラグ (P)

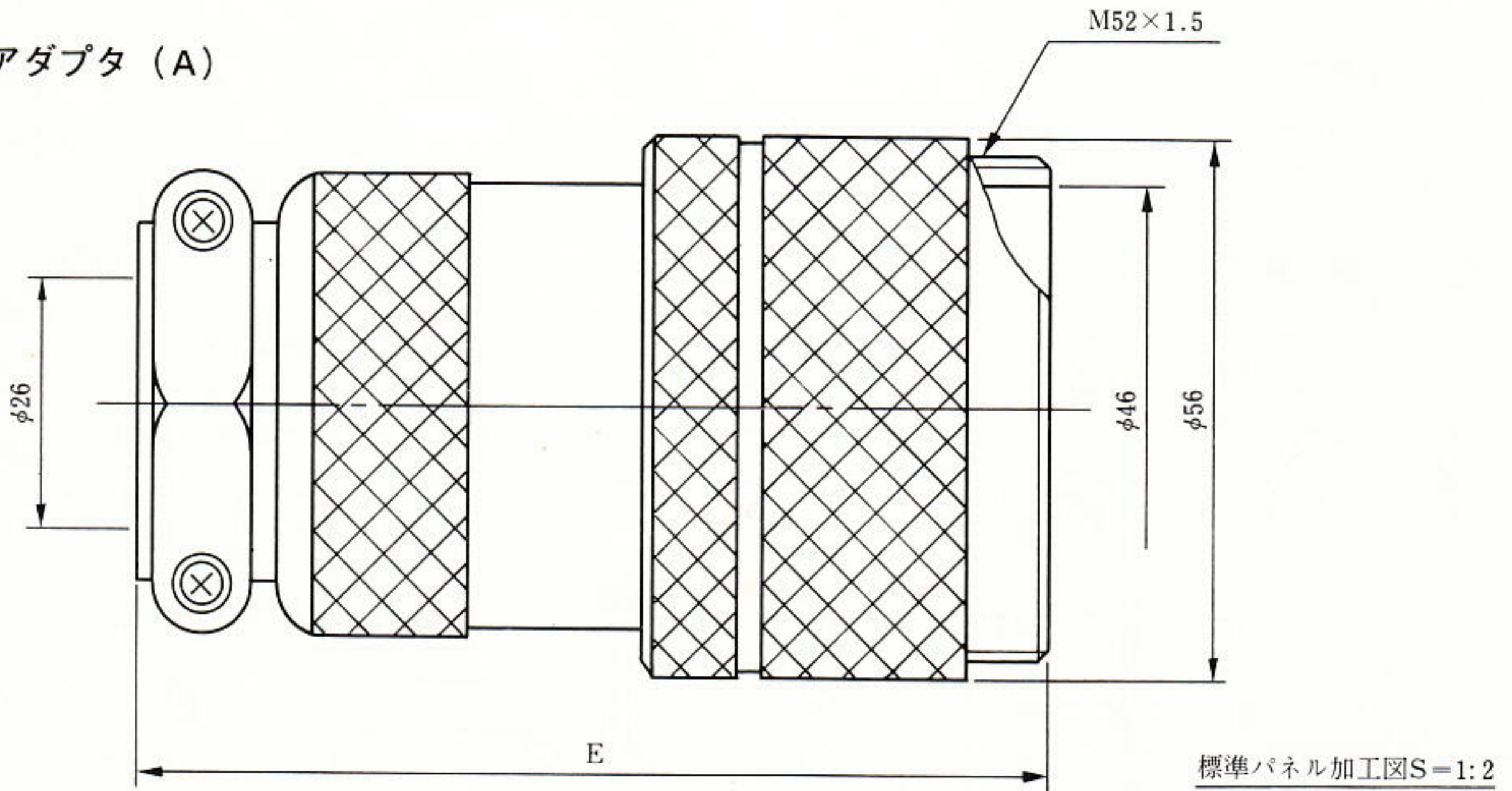


SCK-50

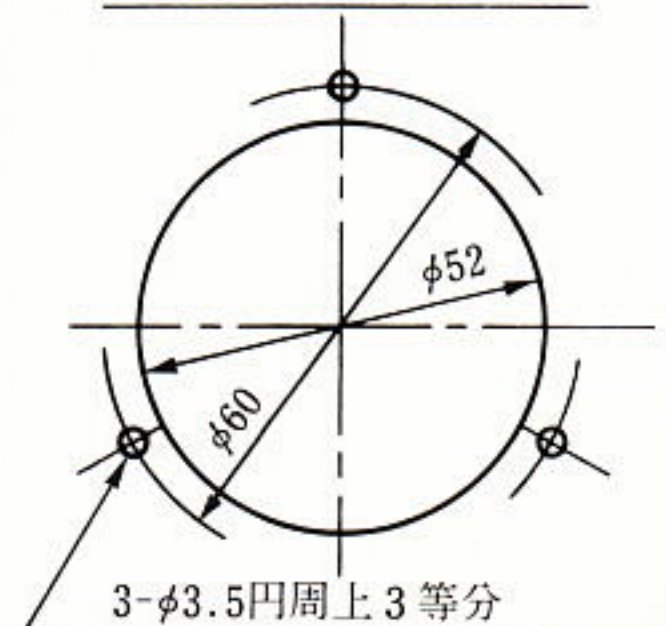
○ レセプタクル (R)



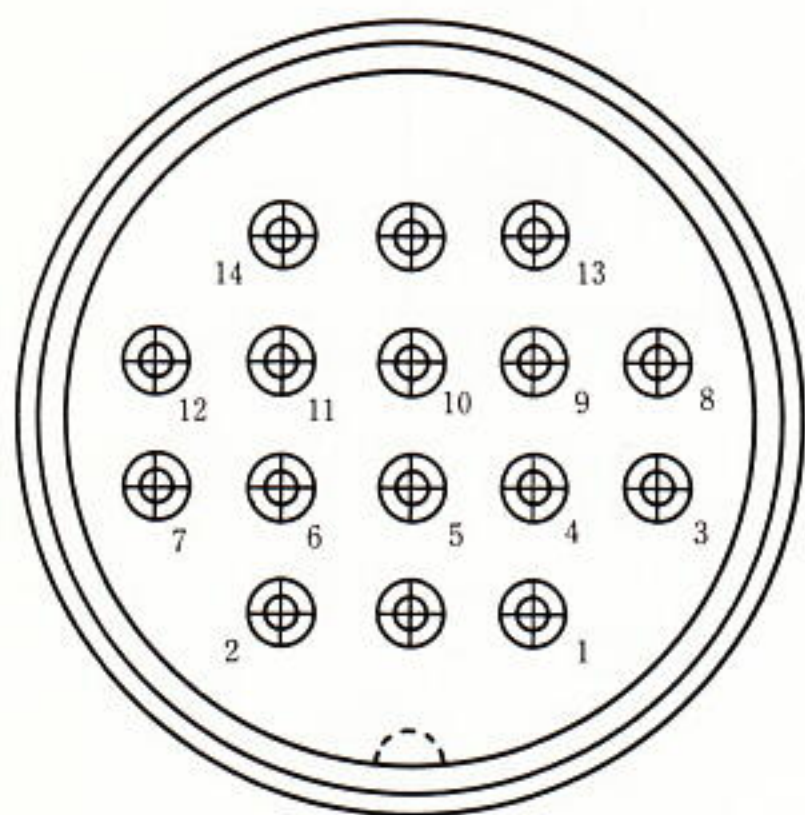
○ アダプタ (A)



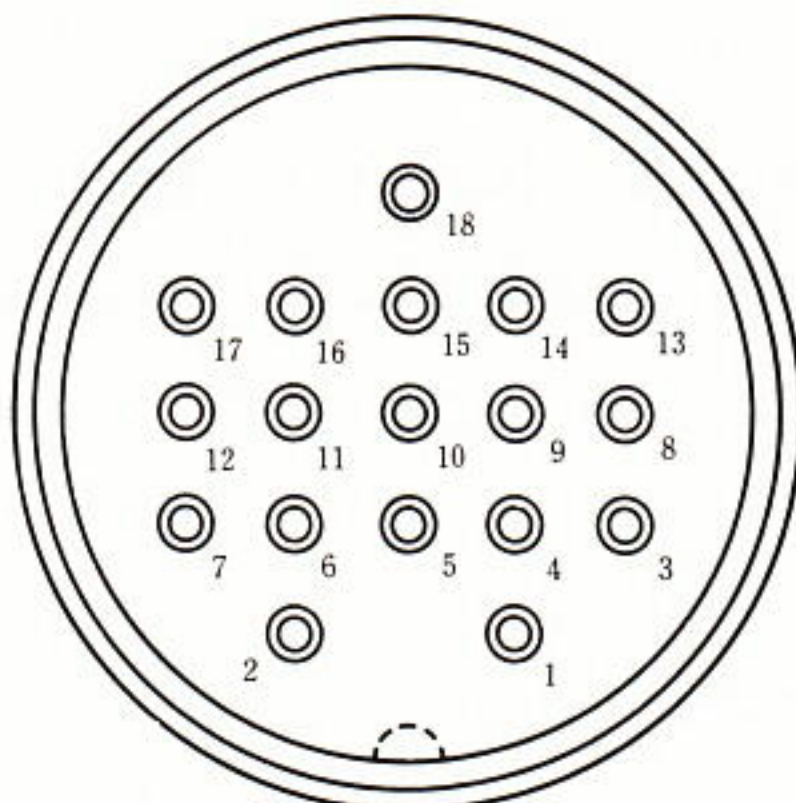
極数	記号	A	B	C	D	E
2・3・4・6		26	83	23	39	94
8以上		16	73	13	24.5	84



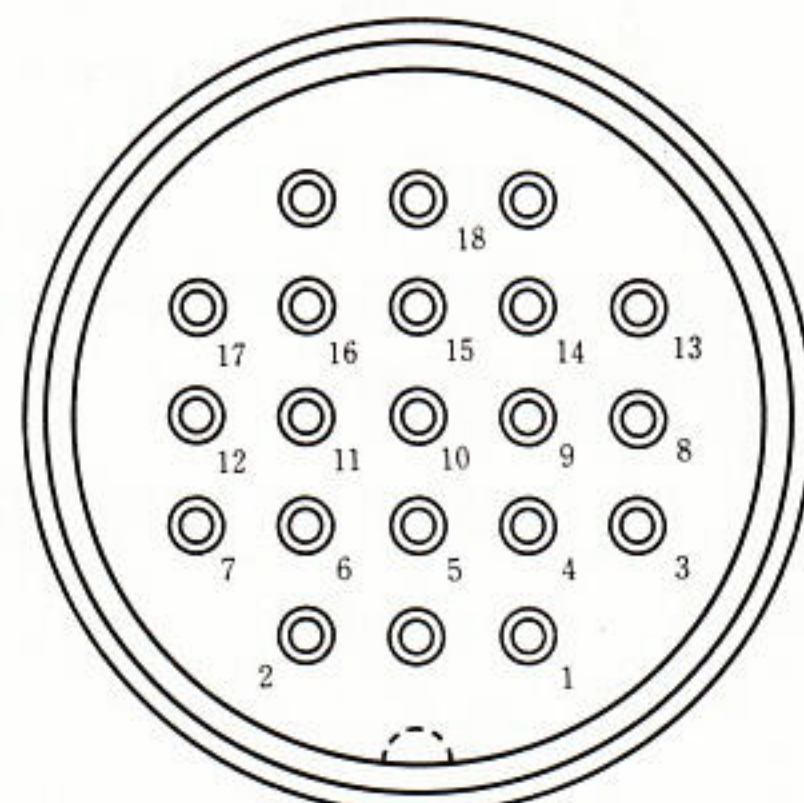
SCK-50



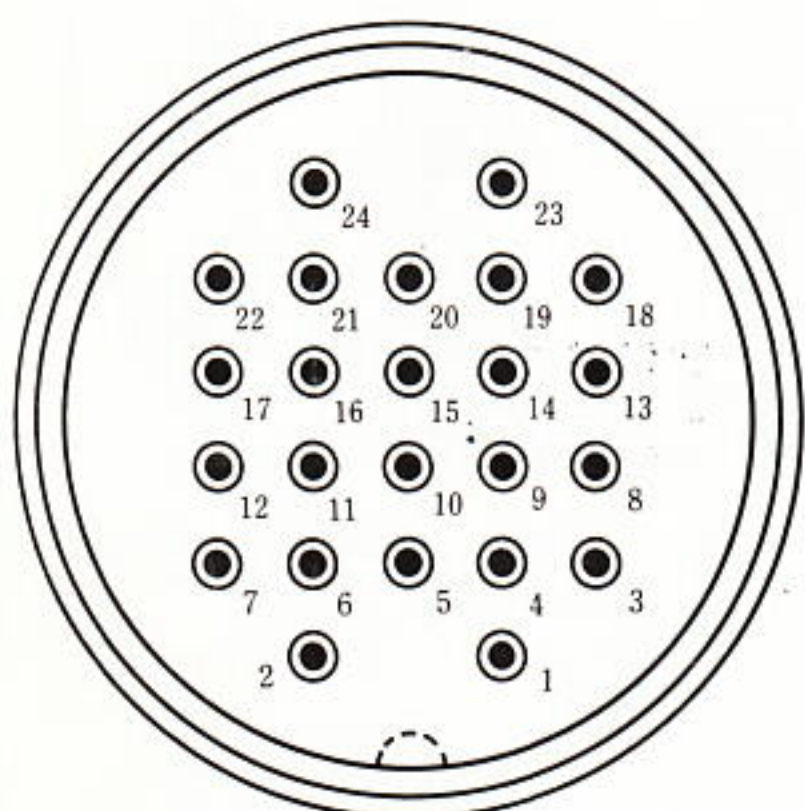
16極



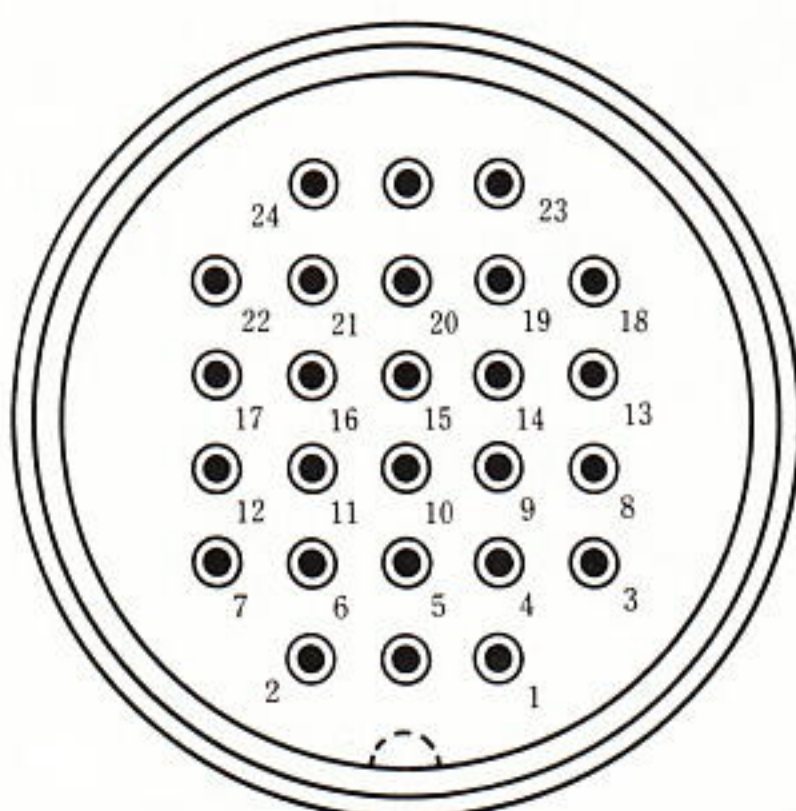
18極



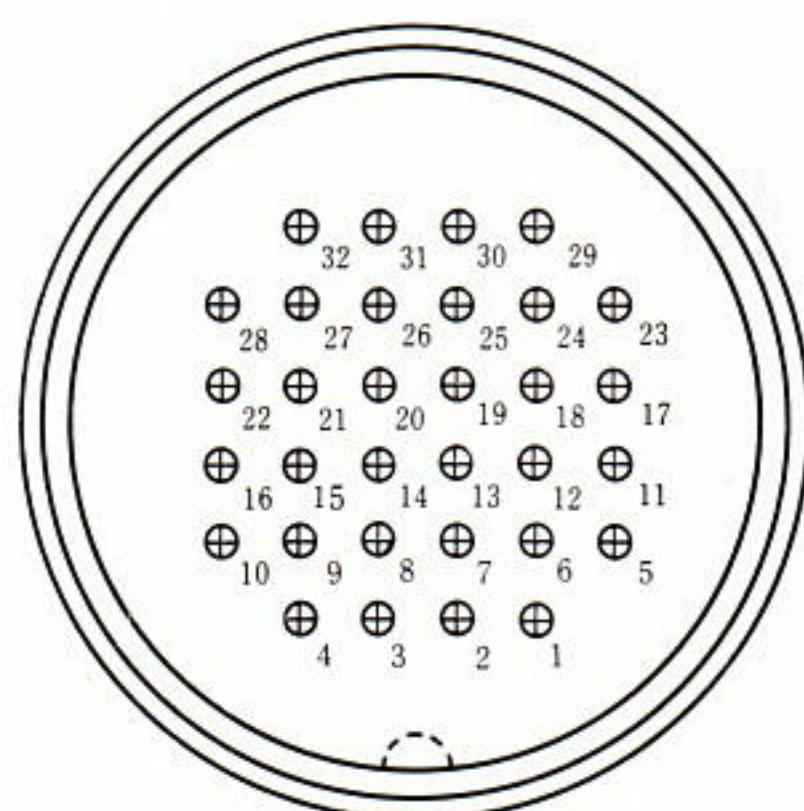
21極



24極



26極



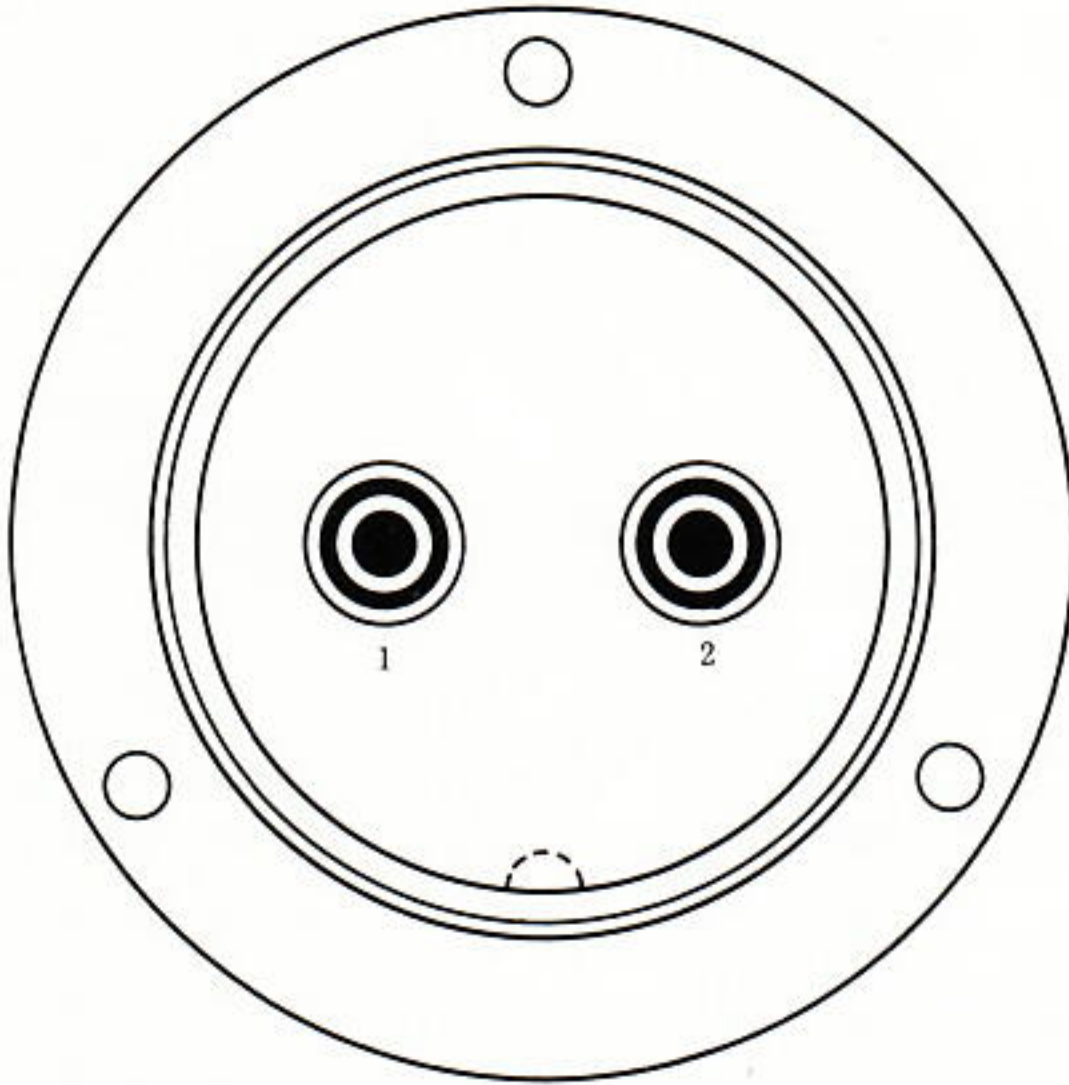
32極

品名	極数	定格	耐電圧(AC)	備考
SCK-5002	2	250V 60A	3,000V 1分間	
SCK-5003	3	250V 60A	3,000V 1分間	
SCK-5004	4	250V 40A	2,500V 1分間	
SCK-5006	6	250V 40A	2,500V 1分間	
SCK-5008	8	250V 30A	2,500V 1分間	
SCK-5010	10	250V 25A	2,000V 1分間	
SCK-5012	12	250V 25A	2,000V 1分間	
SCK-5014	14	250V 20A	2,000V 1分間	
SCK-5015	15	250V 20A	2,000V 1分間	
SCK-5016	16	250V 20A	2,000V 1分間	
SCK-5018	18	250V 10A	1,800V 1分間	
SCK-5019	19	250V 10A	1,800V 1分間	
SCK-5020	20	250V 10A	1,800V 1分間	
SCK-5021	21	250V 10A	1,800V 1分間	
SCK-5024	24	250V 7A	1,800V 1分間	
SCK-5025	25	250V 7A	1,800V 1分間	
SCK-5026	26	250V 7A	1,800V 1分間	
SCK-5032	32	250V 5A	1,500V 1分間	

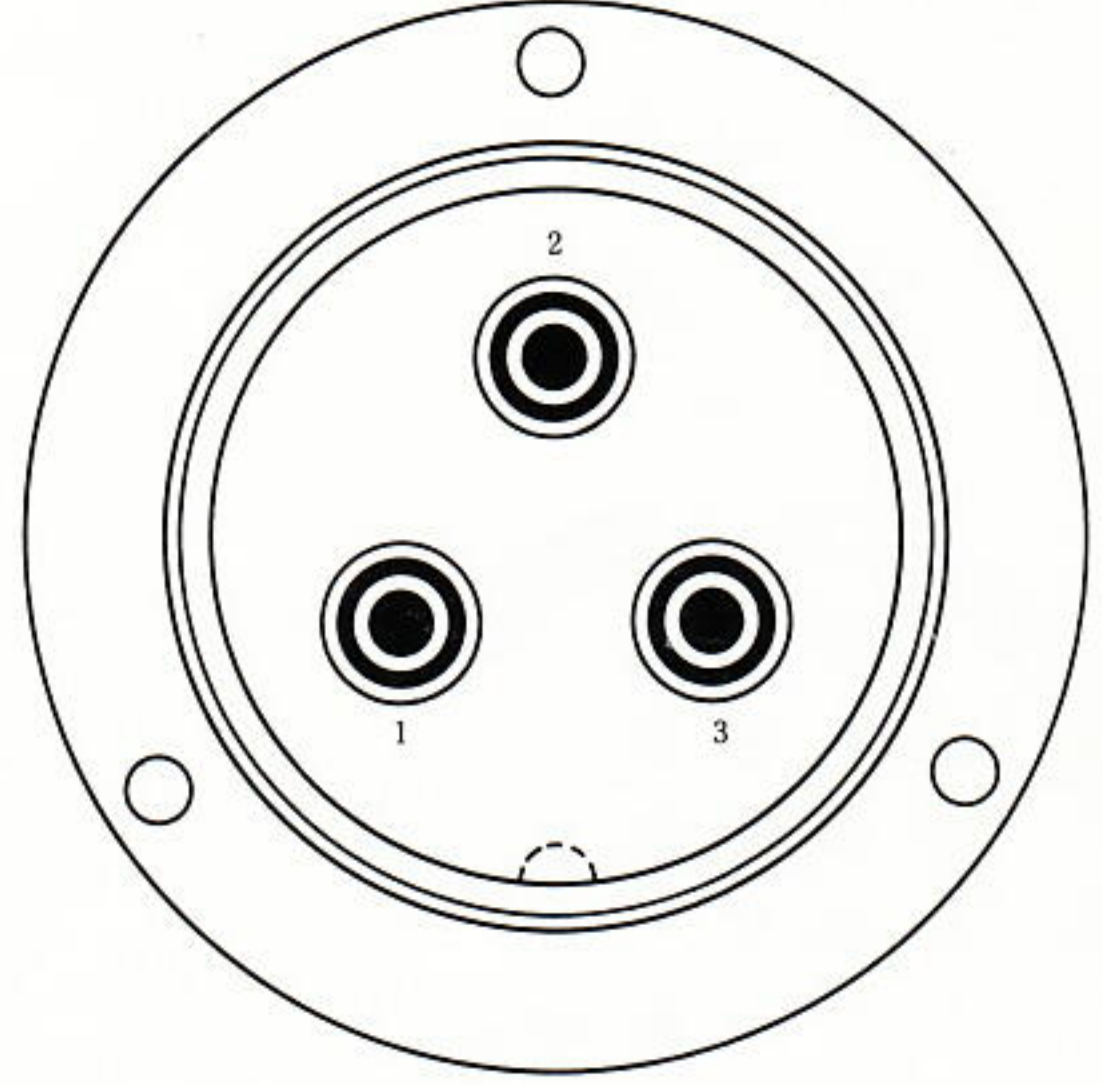
SCK-50

端子直径	2mm	3mm	3.5mm	4mm	4.5mm	6mm	8mm	10mm
記号	⊕	●	◎	⊕	⊕	◎	◎	◎

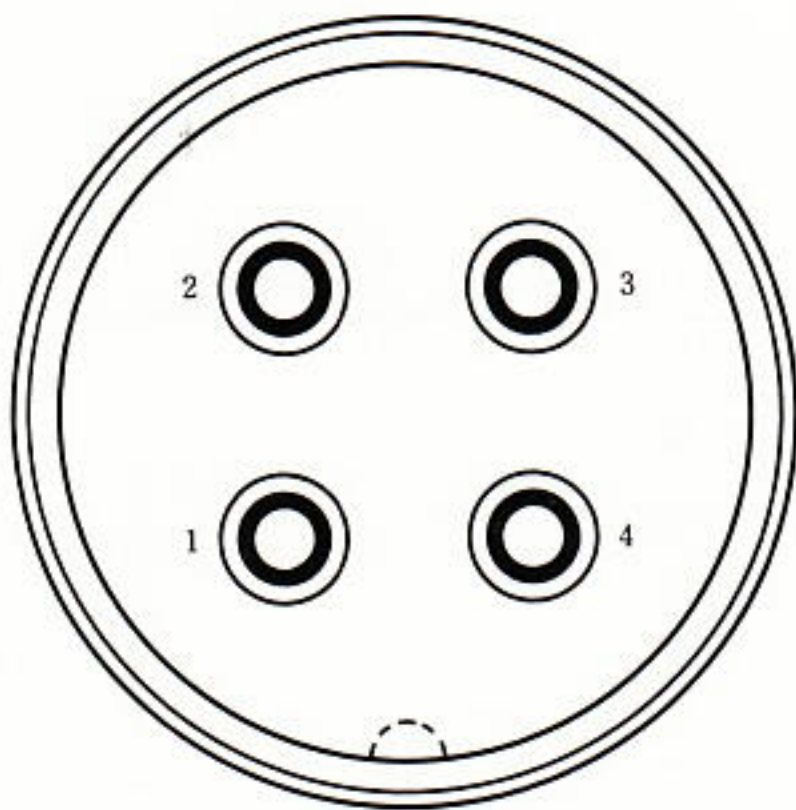
○ 端子配列



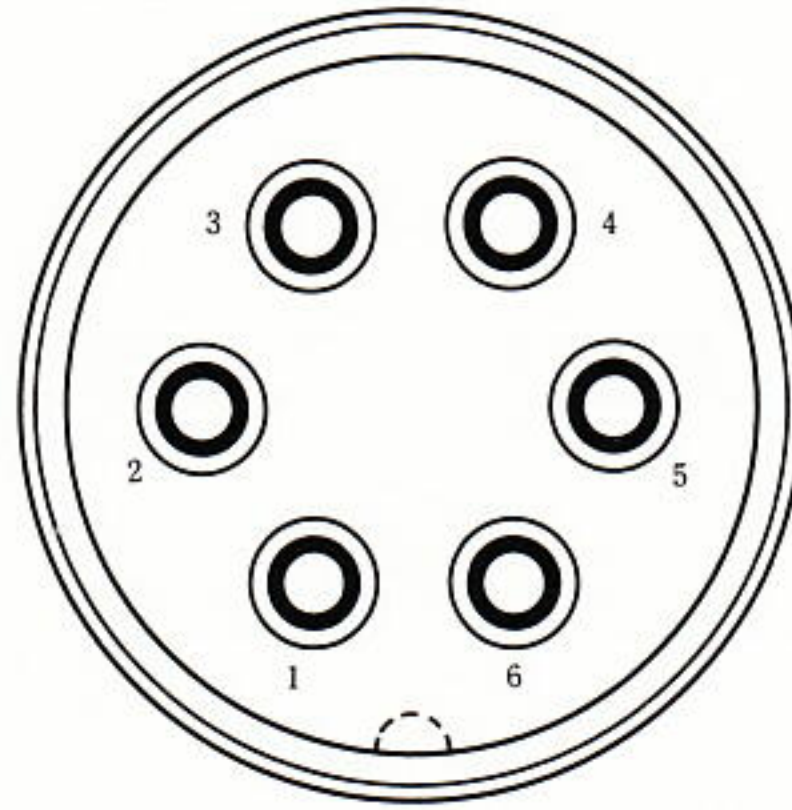
2極



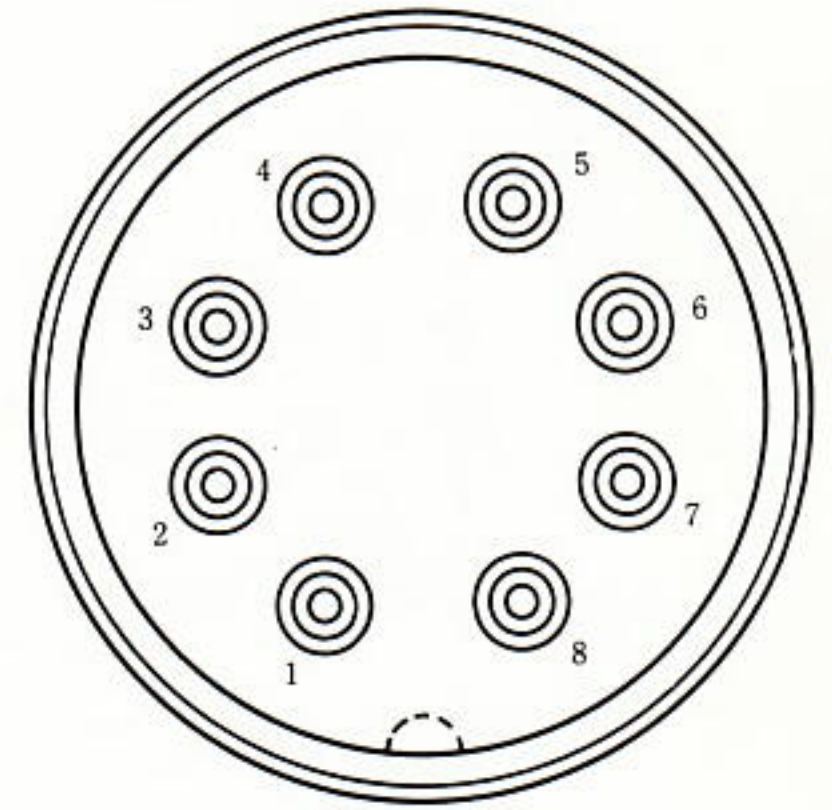
3極



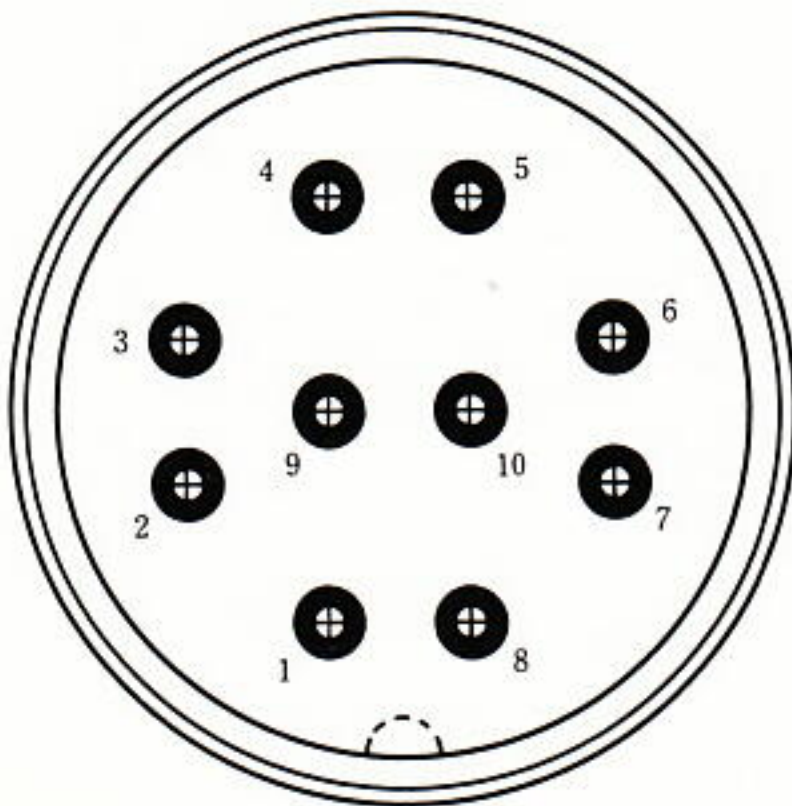
4極



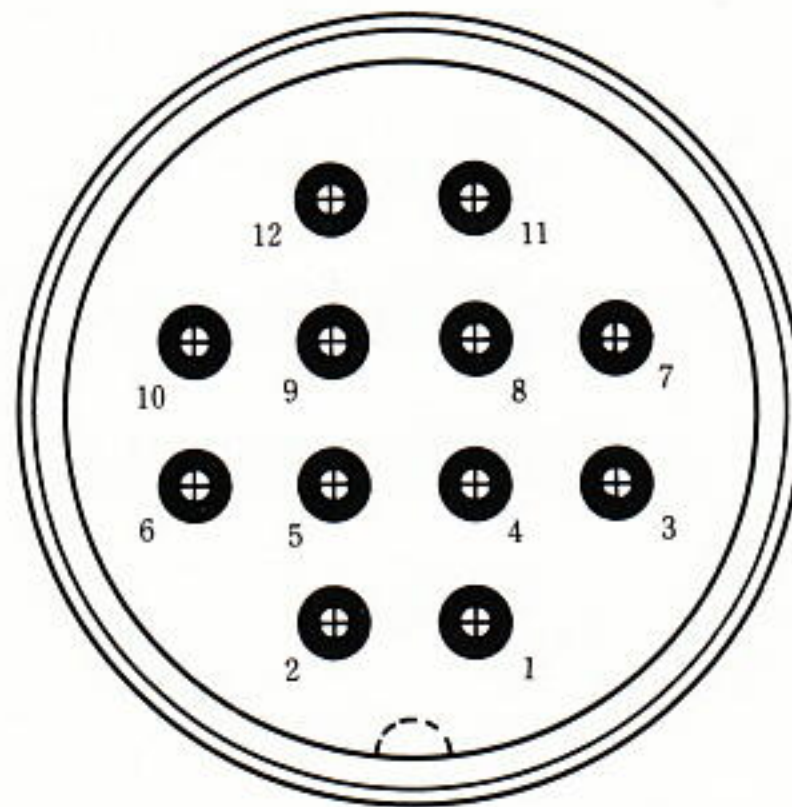
6極



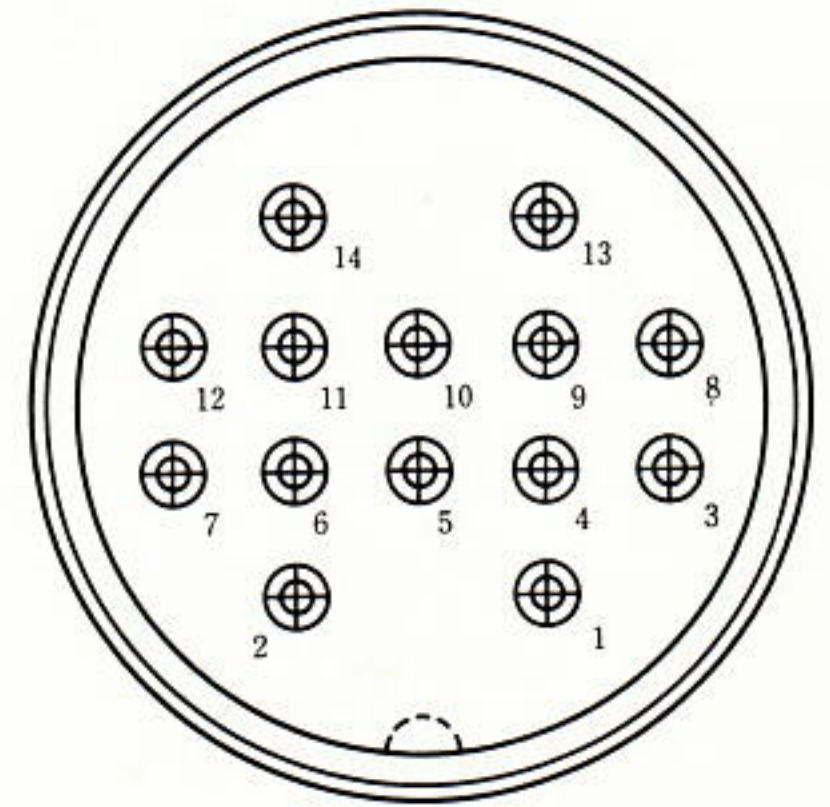
8極



10極



12極



14極